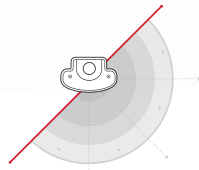




4' Model



8' Option Available

180° Beam Angle

SHL SERIES WRAP | ASYMMETRIC

Lowbay Lighting for warehouse and shipping areas

APPLICATIONS: INDOOR, OFFICE, NEW CONSTRUCTION, WAREHOUSE

Asymmetric Lowbay lighting designed to reduce the obtrusive effects of lighting including light spill and glare. Designed primarily for warehouse and shipping areas where glare control is essential, the SHL series light performs well in areas that require directional lighting.

Down lighting for shipping and sorting areas.

Impact-Resistant polycarbonate frosted lens.

Completely sealed fixture prevents dust and debris build-up.

Plug-and-Play ZigBee Enabled Lighting Controls

STANDARD FEATURES

Out-Of-The-Box



FUTURE PROOF & SCALABLE

SHL Models, Out-of-the-Box

The SHL Series performs true to spec out of the box. 0 - 10 V dimming capable & **Ready to make the Upgrade to LLLC when you are.**

LUMINAIRE LEVEL LIGHTING CONTROLS

Upgrade with Sensor Connect Smart Controls & Accessories



OCCUPANCY SENSING

Requires | SHL Models or LGE-MULTI-SENSOR

Place the Multi-Sensor in SHL Harness for easy standalone lighting controls. Program min/max levels, motion detection and more using tactile buttons.



WIRELESS CONTROLS & OCCUPANCY SENSING

Requires | SHL Model, Multi-Sensor & Android Phone

Convert your lights into a wireless mesh network using your Android Device. Group and commission your lighting network, and set up advanced LLLCs.

Ordering Information (Use Model Numbers column for ordering)

Example: SHL8B3432SU50-RCA-MULTI-SENSOR

Product	Size	Model Number	Watts	CCT	Lumens	Beam	Driver	Options
SHL Series High Output Asymmetric Strip Light	4' Ft.	SHL4B2432SU35*	67 W	3500 K	9,988 lm	180°	Universal AC 120- 277 V 50 - 60 Hz	RCA-MULTI-SENSOR Occupancy Sensor, Wireless Control (Optional) LGE-DONGLE-VLC Wireless Communication Module RCA-DIM-MODULE 0 - 10V Dimming Driver Module SC-SMAH Multi-Sensor Harness, Required For Multi-Sensor RCA-AC Cable Mount Kit All Models EM25W Emergency Pack 25W / 90 Min
		SHL4B2432SU40*	67 W	4000 K	10,083 lm			
		SHL4B2432SU50	67 W	5000 K	10,178 lm			
	8' Ft.	SHL8B3432SU35*	100 W	3500 K	15,373 lm	180°	Universal AC 120- 277 V 50 - 60 Hz	
		SHL8B3432SU40*	100 W	4000 K	15,650 lm			
		SHL8B3432SU50	100 W	5000 K	15,373 lm			

*3500 K & 4000 K Color Temperatures available with Custom Orders. Contact your sales rep for more information.

SHL SERIES WRAP | ASYMMETRIC HIGH OUTPUT

Specs subject to change

Dimensions

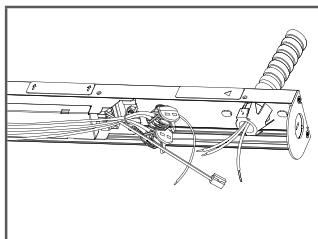
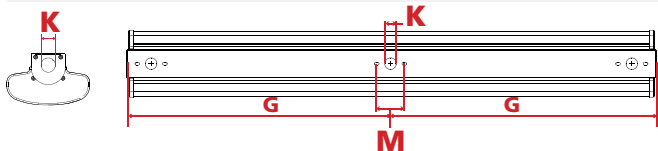
Dimensions : 4' & 8'



Size	Width (W)	Length (L)	Height (H)	Weight
4 ft	5.3"	47.24"	3.0"	5.73 lbs
8 ft	5.3"	94.49"	3.0"	11.6 lbs

Size	Gap (G)	Knockout Size (K)	Mounting (M)
4 ft	21.95"	3/4"	2.08"
8 ft	35.95"	3/4"	2.08"

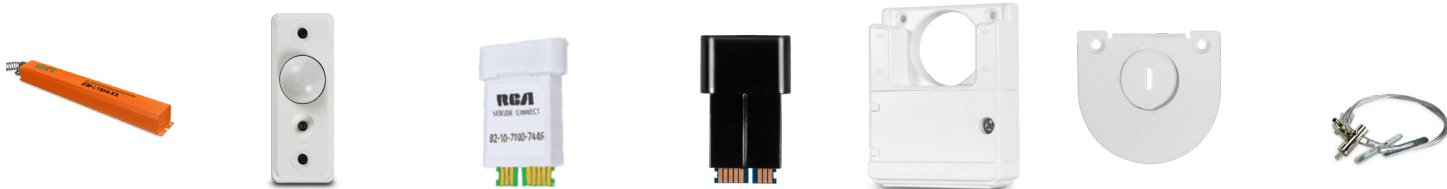
Knockouts : 4' & 8'



Long Wiring Channel

- Easy access wiring channel on back of fixture
- Wagos Connectors Included for quick install
- 3/4" Knockouts in middle and ends for wiring.

Options

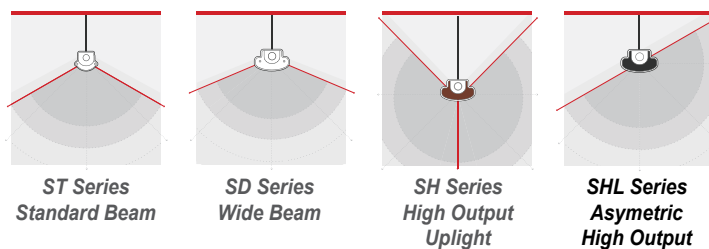


Battery Backup	Smart Lighting Controls			Mounting Kits		
EM25W Emergency Pack 25W / 90 Min	RCA-MULTI-SENSOR Occupancy Sensor Wireless Control (Optional)	LGE-DONGLE-VLC Wireless Communication Only	RCA-DIM-MODULE Dimming Driver Module	SC-SMAH Multi-Sensor Wired Harness, Included on ST/SD Models	RCA-LINEAR-EP Standard Endplate for Linears w/o SC-SMAH Harness	RCA-AC Cable Mount Kit All Models

Lighting Specifications

Size	4'	8'
Power Consumption	Up to 67 W	Up to 100 W
Max Delivered Lumens	Up to 10,178 lm	Up to 15,650 lm
Color Temperature	3500 K, 4000 K, 5000 K	
Optical Unit (Lens)	Frosted Polycarbonate	
Beam Angle	180° Asymmetric High Output	
Efficacy	Up to 154 Lumens Per Watt	
Input Voltage	AC 120 - 277V, 50 - 60 Hz	
CRI	82 +	
L80 Lifetime	50,000 Hours at L80	
Controls	Sensor Connect, Smart Luco, VLC, 0 - 10 V	
Mounting	Surface Mount, Suspended	

Linear Light Beam Angles



Certifications & Warranty

- cULus Listed, UL 1958 Damp Location Use
- DLC V5.1 Listed
- RoHS Compliant
- Meets FCC Standards
- 5 Year Advanced Exchange Warranty