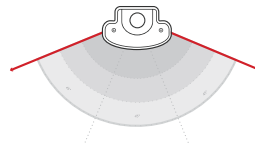


4' Model



135° Beam Angle

8' Option Available

SD SERIES WRAP | WIDE BEAM

Wide Beam, Low Bay Lighting with Wireless Controls

APPLICATIONS: INDOOR, OFFICE, NEW CONSTRUCTION

Compact and powerful, the SD series provides high output lumens in an extruded aluminum body. Its unique combination of form, technology and optics allow it to output up to 40% more lumens than similar lights. Available in 4' and 8' 5000k, 0-10v dimmable models.

Plug-and-Play ZigBee Enabled Lighting Controls

Extruded aluminum housing with machine placed LEDs.

Installer Friendly, quick access channel for end to end wiring.

Available in 4' & 8' Models.

STANDARD FEATURES

Out-Of-The Box



FUTURE PROOF & SCALABLE

All Models, Out-of-the-Box

The SD Series Light performs true to spec out of the box. 0 - 10 V dimming capable & **Ready to make the Upgrade to LLC when you are.**

LUMINAIRE LEVEL LIGHTING CONTROLS

Upgrade with Sensor Connect Smart Controls & Accessories



OCCUPANCY SENSING

Requires | RCA-MULTI-SENSOR

Place the Multi-Sensor in SD Harness for easy standalone lighting controls. Program min/max levels, motion detection and more using tactile buttons.



WIRELESS CONTROLS & OCCUPANCY SENSING

Requires | RCA-MULTI-SENSOR & Android Phone

Convert your lights into a wireless mesh network using your Android Device. Group and commission your lighting network, and set up advanced LLCs.

Ordering Information (Use Model Numbers column for ordering)

Example: SD8B4815SU50-RCA-MULTI-SENSOR

Product	Size	Model Number	Watts	CCT	Lumens	Beam	Driver	Options	
SD Series Wide Beam Strip Light	4' Ft.	SD4B4808SU35*	40 W	3500 K	5,851 lm	135°	Universal AC 120- 277 V 50 - 60 Hz	RCA-MULTI-SENSOR	RCA-LINEAR-EP
		SD4B4808SU40*	40 W	4000 K	5,879 lm			Occupancy Sensor, Wireless Control <i>(Optional)</i>	End Plate If Removing Multi-Sensor Harness
		SD4B4808SU50	40 W	5000 K	5,907 lm				
	8' Ft.	SD8B4815SU35*	80 W	3500 K	12,482 lm	135°	Universal AC 120- 277 V 50 - 60 Hz	LGE-DONGLE-VLC	RCA-AC
		SD8B4815SU40*	80 W	4000 K	12,254 lm			Wireless Communication Module	Cable Mount Kit All Models
		SD8B4815SU50	80 W	5000 K	12,250 lm			RCA-DIM-MODULE	EM25W
							0 - 10V Dimming Driver Module	Emergency Pack 25W / 90 Min	

*3500 K & 4000 K Color Temperatures available with Custom Orders. Contact your sales rep for more information.

SD SERIES WRAP | WIDE BEAM

Specs subject to change

Dimensions, Parts & Knockouts

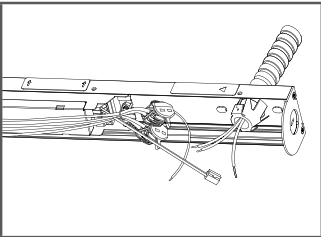
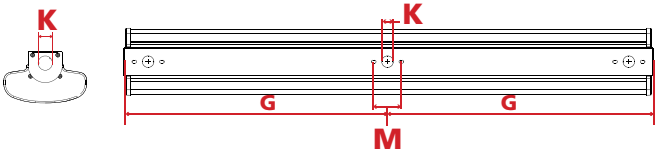
Dimensions : 4' & 8'



Size	Width (W)	Length (L)	Height (H)	Weight
4 ft	5.3"	47.24"	3.0"	5.73 lbs
8 ft	5.3"	94.49"	3.0"	11.6 lbs

Size	Gap (G)	Knockout Size (K)	Mounting (M)
4 ft	21.95"	3/4"	2.08"
8 ft	35.95"	3/4"	2.08"

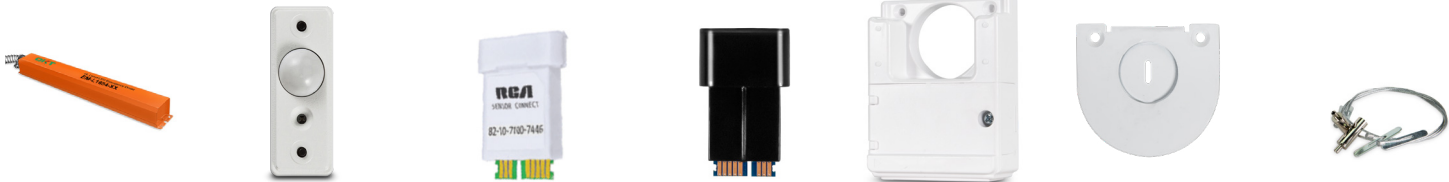
Knockouts : 4' & 8'



Long Wiring Channel

- Easy access wiring channel on back of fixture
- Wagos Connectors Included for quick install
- 3/4" Knockouts in middle and ends for wiring.

Options



Battery Backup

EM25W
Emergency Pack
25W / 90 Min

Smart Lighting Controls

RCA-MULTI-SENSOR
Occupancy Sensor
Wireless Control
(Optional)

LGE-DONGLE-VLC
Wireless
Communication
Only

RCA-DIM-MODULE
Dimming Driver
Module

SC-SMAH
Multi-Sensor Wired
Harness, Included on
ST/SD Models

RCA-LINEAR-EP
Standard Endplate for
Linears w/o SC-SMAH
Harness

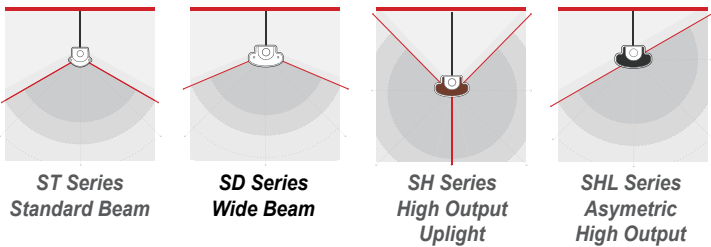
Mounting Kits

RCA-AC
Cable Mount Kit
All Models

Lighting Specifications

Size	4'	8'
Power Consumption	Up to 40 W	Up to 80 W
Max Delivered Lumens	Up to 5,907 lm	Up to 12,482 lm
Color Temperature	3500 K, 4000 K, 5000 K	
Optical Unit (Lens)	Frosted Polycarbonate	
Beam Angle	135° Wide Beam	
Efficacy	Up to 153 Lumens Per Watt	
Input Voltage	AC 120 - 277V, 50 - 60 Hz	
CRI	80 +	
L80 Lifetime	50,000 Hours at L80	
Controls	Sensor Connect, Smart Luco, VLC, 0 - 10 V	
Mounting	Surface Mount, Suspended	

Linear Light Beam Angles



Certifications & Warranty

- cULus Listed, UL 1958 Damp Location Use
- DLC V5.1 Listed
- RoHS Compliant
- Meets FCC Standards
- 5 Year Advanced Exchange Warranty