



# Installation Manual

## LED Recessed Troffer

### Integrated with Sensor

This installation manual is only valid for the following RCA LED Recessed Troffer integrated with sensor



2' x 2'



2' x 4'

- For your safety, please read the 「Safety Precautions」 prior to installation.

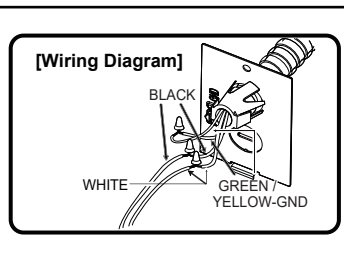
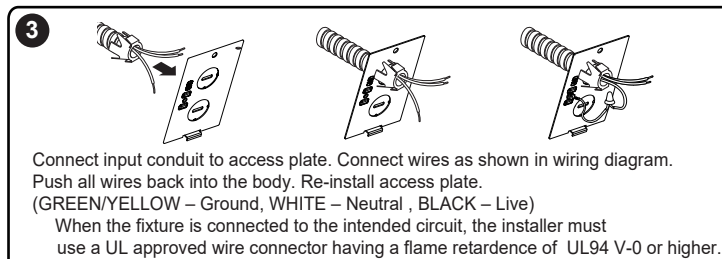
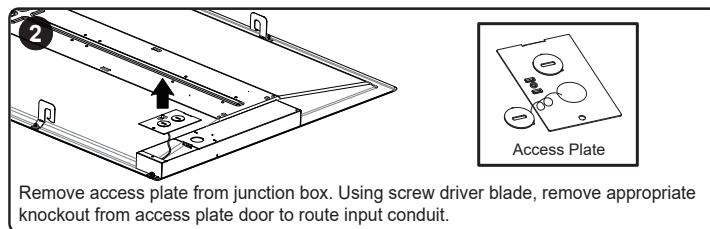
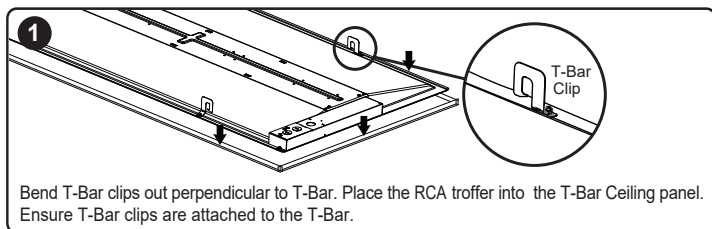
### ● Safety precautions

Failure to follow the RCA installation manual and instructions could lead to product damage or serious physical injury.

#### ⚠ WARNING

- To avoid the risk of electrical shock, all electrical work must be performed as instructed in this installation manual by a licensed and qualified electrician.
- Prior to installation, please verify and confirm all electrical circuit breakers are properly operating and functional. Designated circuits and circuit breakers should be turned OFF prior to installing the fixture.
- Prior to installation, please verify all electrical circuitry or wiring is properly operating and functional. Please confirm the correct circuit voltage (120 V - 277 V) and polarity prior to installing fixtures.
- To avoid the risk of electrical shock, ensure that the fixture and electrical circuits are properly grounded prior to installation.
- Installation in areas experiencing casual water damage, flooding, or high humidity should be avoided. This fixture is not suitable for underwater lighting purposes or water spray down applications.
- Do not install this fixture if defects are noticeable or the product has experienced damage during shipping or storage. Contact RCA Technical Support for warranty coverage and assistance.
- Do not temporarily store nor permanently install this product near flammable objects or in areas with high risks of fire.
- Failure to install this fixture, in its entirety and as provided by RCA Lighting Solutions, may void the warranty. RCA is not responsible for fixtures that are modified to be used in any other way than its intended purpose.
- Do not use or install if the fixture has been damaged due to dropping or prior electrical shock. Should the product owner or installer determine the fixture is not operable, please contact RCA Technical Support for product and warranty assistance.
- During cleaning, please attempt to minimize the use of water, alcohol, benzene, or acetone in order to avoid the risk of electrical shock as well as potential degradation of the fixture surfaces and lens.
- To prevent damage during ceiling installation, RCA recommends having at least (2) qualified electricians assisting with the installation.
- Operating temperature of the LED Troffer and Driver is to be maintained between -20 °C ~ 40 °C (-4°F~104°F) to comply with all safety and warranty regulation.
- Do not install where the product may be exposed to direct sunlight.
- Wear gloves to prevent cuts or abrasions when removing the product from carton, when handling, when installing, and when maintaining the product. Edges can cut. Handle with care.
- Do not install nearby air conditioners and heating appliance.
- Avoid metal and reinforced concrete walls etc, between products if you want to use its wireless communication function.
- This product meets the electromagnetic wave standards specified by CE and FCC/IC, but it may malfunction in noisy RF environments. (Example : Where strong RF transmit / receive devices or strong electromagnetic machines are used)

### ● Installation

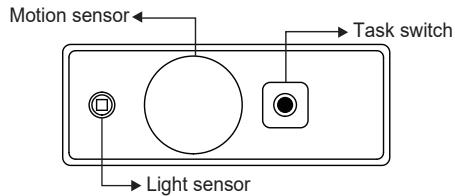


- This product has been manufactured and sold under the responsibility of DTI SERVICES LLC..
- RCA, the RCA logo and the two dogs (Nipper and Chipper) logo are trademarks used under license by DTI SERVICES LLC. – further information at [www.rca-brand.com](http://www.rca-brand.com).
- All other products, services, companies, trademarks, trade or product names and logos referenced herein are the property of their respective owners.

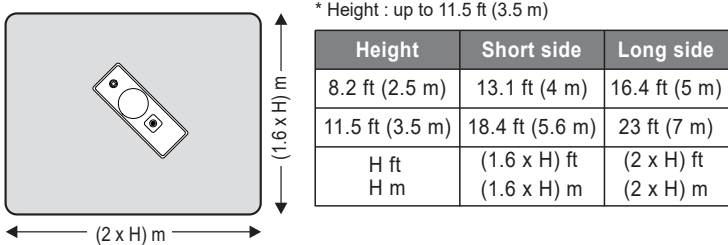
## Sensors information

### Smart Multi Sensor with ZigBee Dongle

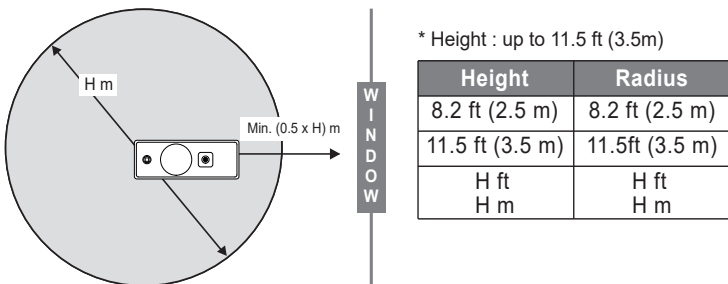
#### Design



#### Motion sensing area



#### Light sensing area



#### Factory reset

- Turn the main power on and off 10 times in a row.
- Press "Task switch" on the sensor 10 times in a row.

## RCA SENSOR CONNECT

RCA SENSOR CONNECT is the stand-alone system that doesn't need any additional control devices except sensor-embedded troffers. For further details, please consult sales representatives.

THIS PRODUCT MUST BE INSTALLED IN ACCORDANCE WITH THE APPLICABLE INSTALLATION CODE BY A PERSON FAMILIAR WITH THE CONSTRUCTION AND OPERATION OF THE PRODUCT AND THE HAZARDS INVOLVED

#### FCC Notice :

This equipment has been tested and found to comply with the limits for a Class B digital device, pursuant to part 15 of the FCC Rules. These limits are designed to provide reasonable protection against harmful interference in a residential installation. This equipment generates, uses and can radiate radio frequency energy and, if not installed and used in accordance with the instructions, may cause harmful interference to radio communications. However, there is no guarantee that interference will not occur in a particular installation. If this equipment does cause harmful interference to radio or television reception, which can be determined by turning the equipment off and on, the user is encouraged to try to correct the interference by one or more of the following measures:

- Reorient or relocate the receiving antenna.
- Increase the separation between the equipment and receiver.
- Connect the equipment into an outlet on a circuit different from that to which the receiver is connected.
- Consult the dealer or an experienced radio/TV technician for help.

This device complies with part 15 of the FCC Rules. Operation is subject to the following two conditions:

- (1) this device may not cause harmful interference and
- (2) this device must accept any interference received, including interference that may cause undesired operation of the device.

Any changes or modifications in construction of this device which are not expressly approved by the party responsible for compliance could void the user's authority to operate the equipment.

#### FCC RF Radiation Exposure Statement :

This equipment complies with FCC radiation exposure limits set forth for an uncontrolled environment. This transmitter must not be co-located or operating in conjunction with any other antenna or transmitter. This equipment should be installed and operated with a minimum distance of 20 cm (7.8 inches) between the antenna and your body. Users must follow the specific operating instructions for satisfying RF exposure compliance.

Contains FCC ID : TGEACM20ZE1

### Technical data

Motion sensor	Passive Infrared(PIR) Sensor
Frequency	2405.0 ~ 2480.0 MHz
Wireless range	Line of sight 98 ft (30 m)
Operating conditions	For Indoor use only
Humidity	0 to 85 % Rh
Installation height	Up to 11.5 ft (3.5 m)
Light sensing range	1 ~ 1000 lx

### Field adjustable sensor values (for stand-alone luminaire use only)

Default Light Settings	
Max Light Level	80%
Mid Light Level	80%
Minimum Light Level	0%
Motion	Enabled
Daylight	Disabled
Dim Down	N/A
Time Out	30:00 Minutes
Sensitivity	HIGH

Button Configuration			
Task Switch # of Presses	Max	Mid	Min
1	80%	40%	0%
2	60%	40%	0%
3	40%	20%	0%
4	100%	40%	0%
	Dim Down	Time Out	Total
5	05:00 Minutes	05:00 Minutes	10:00 Minutes
6	15:00 Minutes	05:00 Minutes	20:00 Minutes
7	25:00 Minutes	05:00 Minutes	30:00 Minutes
8	00:30 Minutes	00:30 Minutes	01:00 Minutes
9 (Night-light / EM Driver Mode)	100%	40%	20%
10	Factory Reset		

Long Presses (5 seconds hold)	Default	Rotation
CCT	5000K ▶ 4500K ▶ 4000K ▶ 3500K ▶ 3000K	

CAUTION : Make sure that the number of troffer reaction is same with the number of times you pressed the button.

Responsible Party :  
**RCA Lighting Solutions**  
 5935 W. 84th Street, Suite A,  
 Indianapolis, In 46278  
[www.rcaled.com](http://www.rcaled.com)  
 Phone. (800) 722-2161