

SCENE SELECTOR

Wireless Lighting Control Switch with Multiple Settings

APPLICATIONS: CONFERENCE ROOMS, COMMON AREAS, CLASS ROOMS

Common areas in buildings are used by multiple users for more than one purpose, requiring different lighting conditions. RCA Scene Selector is a preset control system that adjusts several lighting channels simultaneously to provide the proper lighting for each application of the room.

Wireless: Saves money on installation, running cable and drywall repair

Easy setup and commissioning using the RCA Sensor Connect App

Integrated scheduling function for additional energy saving

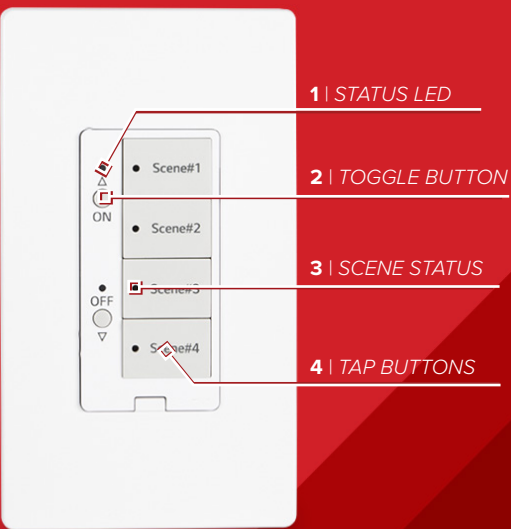
Program up to 4 lighting scenes for different room requirements

SCENE SELECTOR INSTRUCTIONS

How to use the RCA Wireless Scene Selector

- Status LED (Power / DIM)**
Indicates status of low battery and OTA
- Toggle Button**
ON / OFF / DIM (hold)
- Scene Status (Operating)**
Indicate status of current scene
- Tap Button**
Recall Scene
Default: 25%, 50%, 75%, 100%

SCENE EXAMPLES



SPECIFICATIONS

Model Number	LGE-SWITCH-4B-SC	Range	98.4 ft.
Voltage	AAA Alkaline, 1.5 V Battery (x4)	Size	1.0" x 1.28" x 9.06"
Frequency	2405 ~ 2480	Weight	3.2 Oz
Dimming	1 - 10 Vdc	Certifications	DLC, NLC, QPL Listed
Operating Temperature	-4° to 158° F (-22° to 70° C)		