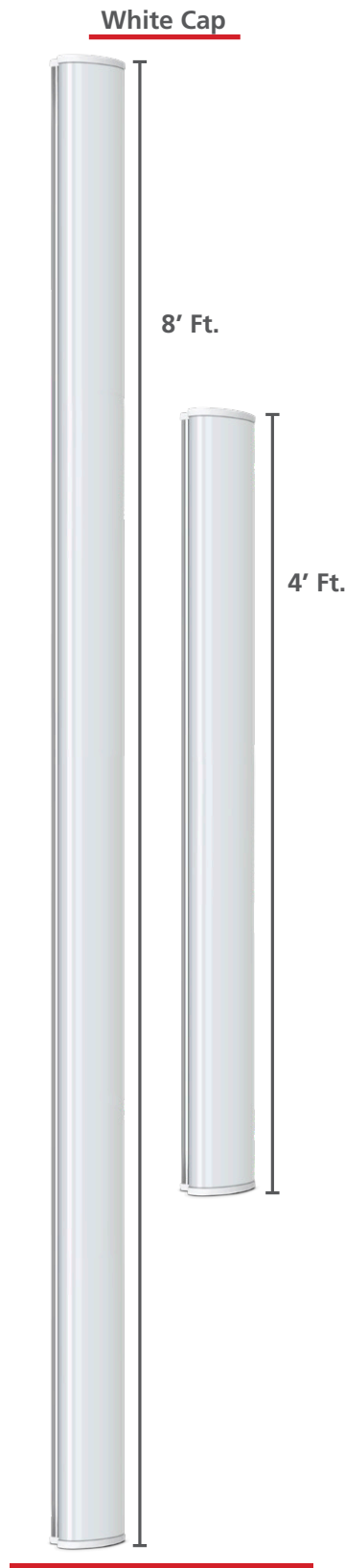


LINEAR LIGHTING : SD SERIES

Specs subject to change



Which light is right for you?

Key Features



SD Linear Light

The SD Series High Output light casts light in 135° directly below the light, covering shipping & sorting areas.



Glare Reducing Diffuser

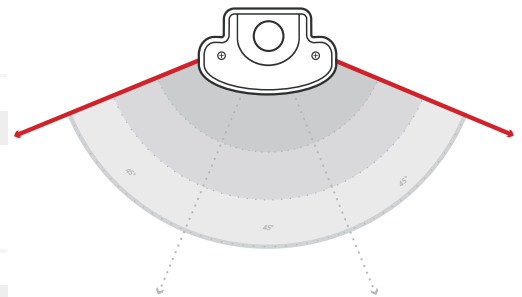
Proprietary diffuser reduces glare by evenly distributing light generated by high output LEDs.



Sealed Fixture

Moisture resistant fixture, prevents dust and insect intrusion.

Light Dispersion Diagram: 135° Coverage



Specifications	SD4B4808DU50	SD8B4815NU50
SD Series Linear Lights		
Size	4' Linear	8' Linear
Watts	42 W	84 W
Efficacy	123.8 lm/W	124 lm/W
Lumen Output	5,200 lm	10,400 lm
L80 Lifetime	50,000 hr. at L ₈₀	50,000 hr. at L ₈₀
Input Voltage	AC 120 - 277 V	AC 120 - 277 V
Operating Temperature	14 to 104° F	14 to 104° F
Length	47.24 in.	94.49 in.
Width	5.30 in.	5.30 in.
Depth	3.00 in.	3.00 in.
Weight	5.73 lbs	11.6 lbs
CRI	≥80	≥80
Color Temperature (CCT)	5000 K	5000 K

